



Klintaberget

 Utredningsområde

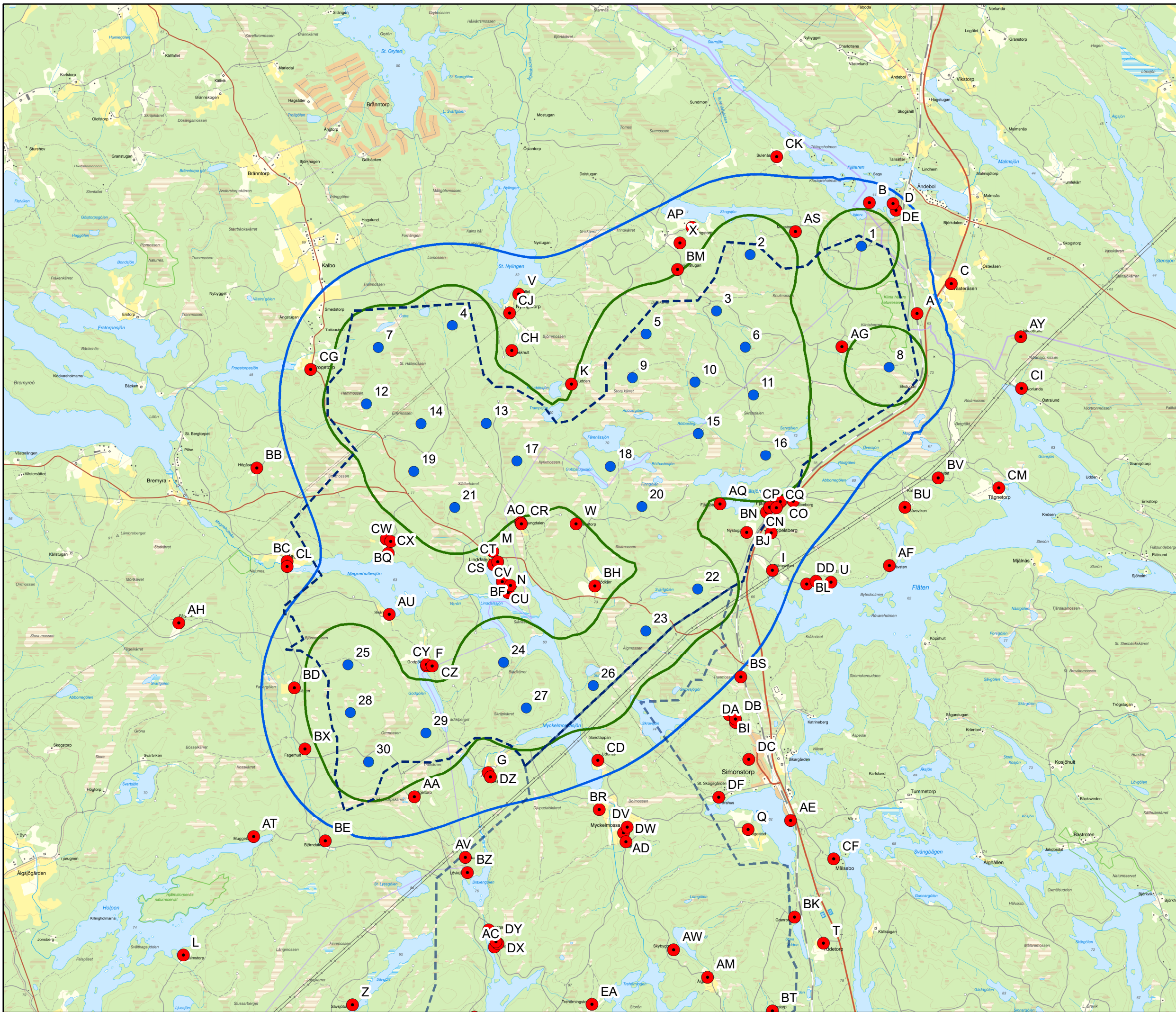
 Ljudkänsliga objekt

 Exempel på verksplacering

Ljudnivå

 35 dB(A)

 40 dB(A)



Sweco Energy AB/seaubo
 Datum: 2020-09-21
 © Lantmäteriet



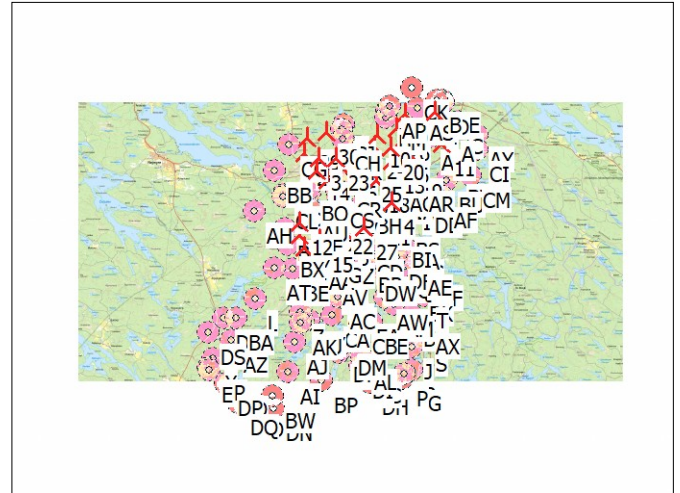
DECIBEL - Main Result

Calculation: 20200825 KLB

SVENSKA BESTÄMMELSER FÖR EXTERNT BULLER FRÅN
 LANDBASERADE VINDKRAFTVERK

Beräkningen är baserad på den av Statens Naturvårdsverk
 rekommenderad metod "Ljud från vindkraftverk", 2010 (NV dnr
 382-6897-07 Rv)

All coordinates are in
 Swedish UTM 33-SWREF99 (SE)



WTGs

	Easting	Northing	Z	Row data/Description	WTG type			Power, rated [kW]	Rotor diameter [m]	Hub height [m]	Noise data		Wind speed [m/s]	Status	LwA,ref [dB(A)]	Pure tones
					Valid	Manufact.	Type-generator				Creator	Name				
1	568123	6523908	57,2	Sweco SW180 7400 180,0 I-I hu...No	Sweco	SW180-7400	7400	180,0	200,0	USER	V150 Level 0 - - Mode 0 - 10-2019	8,0	From other hub height	104,9	No h	
2	561246	6516714	102,3	Sweco SW180 7400 180,0 I-I hu...No	Sweco	SW180-7400	7400	180,0	200,0	USER	V150 Level 0 - - Mode 0 - 10-2019	8,0	From other hub height	104,9	No h	
3	561976	6521431	92,1	Sweco SW180 7400 180,0 I-I hu...No	Sweco	SW180-7400	7400	180,0	200,0	USER	V150 Level 0 - - Mode 0 - 10-2019	8,0	From other hub height	104,9	No h	
4	565839	6519123	74,9	Sweco SW180 7400 180,0 I-I hu...No	Sweco	SW180-7400	7400	180,0	200,0	USER	V150 Level 0 - - Mode 0 - 10-2019	8,0	From other hub height	104,9	No h	
5	563446	6517464	102,8	Sweco SW180 7400 180,0 I-I hu...No	Sweco	SW180-7400	7400	180,0	200,0	USER	V150 Level 0 - - Mode 0 - 10-2019	8,0	From other hub height	104,9	No h	
6	566616	6521833	77,4	Sweco SW180 7400 180,0 I-I hu...No	Sweco	SW180-7400	7400	180,0	200,0	USER	V150 Level 0 - - Mode 0 - 10-2019	8,0	From other hub height	104,9	No h	
7	566503	6522497	76,1	Sweco SW180 7400 180,0 I-I hu...No	Sweco	SW180-7400	7400	180,0	200,0	USER	V150 Level 0 - - Mode 0 - 10-2019	8,0	From other hub height	104,9	No h	
8	562446	6520264	89,2	Sweco SW180 7400 180,0 I-I hu...No	Sweco	SW180-7400	7400	180,0	200,0	USER	V150 Level 0 - - Mode 0 - 10-2019	8,0	From other hub height	104,9	No h	
9	566570	6523788	80,0	Sweco SW180 7400 180,0 I-I hu...No	Sweco	SW180-7400	7400	180,0	200,0	USER	V150 Level 0 - - Mode 0 - 10-2019	8,0	From other hub height	104,9	No h	
10	565119	6522679	72,7	Sweco SW180 7400 180,0 I-I hu...No	Sweco	SW180-7400	7400	180,0	200,0	USER	V150 Level 0 - - Mode 0 - 10-2019	8,0	From other hub height	104,9	No h	
11	568509	6522220	77,4	Sweco SW180 7400 180,0 I-I hu...No	Sweco	SW180-7400	7400	180,0	200,0	USER	V150 Level 0 - - Mode 0 - 10-2019	8,0	From other hub height	104,9	No h	
12	560957	6518062	95,9	Sweco SW180 7400 180,0 I-I hu...No	Sweco	SW180-7400	7400	180,0	200,0	USER	V150 Level 0 - - Mode 0 - 10-2019	8,0	From other hub height	104,9	No h	
13	565848	6521296	74,9	Sweco SW180 7400 180,0 I-I hu...No	Sweco	SW180-7400	7400	180,0	200,0	USER	V150 Level 0 - - Mode 0 - 10-2019	8,0	From other hub height	104,9	No h	
14	561876	6520766	85,9	Sweco SW180 7400 180,0 I-I hu...No	Sweco	SW180-7400	7400	180,0	200,0	USER	V150 Level 0 - - Mode 0 - 10-2019	8,0	From other hub height	104,9	No h	
15	562046	6517114	97,1	Sweco SW180 7400 180,0 I-I hu...No	Sweco	SW180-7400	7400	180,0	200,0	USER	V150 Level 0 - - Mode 0 - 10-2019	8,0	From other hub height	104,9	No h	
16	563316	6520909	79,1	Sweco SW180 7400 180,0 I-I hu...No	Sweco	SW180-7400	7400	180,0	200,0	USER	V150 Level 0 - - Mode 0 - 10-2019	8,0	From other hub height	104,9	No h	
17	560992	6517398	94,8	Sweco SW180 7400 180,0 I-I hu...No	Sweco	SW180-7400	7400	180,0	200,0	USER	V150 Level 0 - - Mode 0 - 10-2019	8,0	From other hub height	104,9	No h	
18	565060	6520274	79,4	Sweco SW180 7400 180,0 I-I hu...No	Sweco	SW180-7400	7400	180,0	200,0	USER	V150 Level 0 - - Mode 0 - 10-2019	8,0	From other hub height	104,9	No h	
19	566787	6520991	81,2	Sweco SW180 7400 180,0 I-I hu...No	Sweco	SW180-7400	7400	180,0	200,0	USER	V150 Level 0 - - Mode 0 - 10-2019	8,0	From other hub height	104,9	No h	
20	565799	6522012	69,1	Sweco SW180 7400 180,0 I-I hu...No	Sweco	SW180-7400	7400	180,0	200,0	USER	V150 Level 0 - - Mode 0 - 10-2019	8,0	From other hub height	104,9	No h	
21	565115	6518541	80,9	Sweco SW180 7400 180,0 I-I hu...No	Sweco	SW180-7400	7400	180,0	200,0	USER	V150 Level 0 - - Mode 0 - 10-2019	8,0	From other hub height	104,9	No h	
22	563129	6518099	84,3	Sweco SW180 7400 180,0 I-I hu...No	Sweco	SW180-7400	7400	180,0	200,0	USER	V150 Level 0 - - Mode 0 - 10-2019	8,0	From other hub height	104,9	No h	
23	562885	6521435	89,4	Sweco SW180 7400 180,0 I-I hu...No	Sweco	SW180-7400	7400	180,0	200,0	USER	V150 Level 0 - - Mode 0 - 10-2019	8,0	From other hub height	104,9	No h	
24	564926	6522071	74,4	Sweco SW180 7400 180,0 I-I hu...No	Sweco	SW180-7400	7400	180,0	200,0	USER	V150 Level 0 - - Mode 0 - 10-2019	8,0	From other hub height	104,9	No h	
25	564620	6520836	76,1	Sweco SW180 7400 180,0 I-I hu...No	Sweco	SW180-7400	7400	180,0	200,0	USER	V150 Level 0 - - Mode 0 - 10-2019	8,0	From other hub height	104,9	No h	
26	565103	6522005	71,2	Sweco SW180 7400 180,0 I-I hu...No	Sweco	SW180-7400	7400	180,0	200,0	USER	V150 Level 0 - - Mode 0 - 10-2019	8,0	From other hub height	104,9	No h	
27	564380	6517778	86,1	Sweco SW180 7400 180,0 I-I hu...No	Sweco	SW180-7400	7400	180,0	200,0	USER	V150 Level 0 - - Mode 0 - 10-2019	8,0	From other hub height	104,9	No h	
28	561213	6521708	81,9	Sweco SW180 7400 180,0 I-I hu...No	Sweco	SW180-7400	7400	180,0	200,0	USER	V150 Level 0 - - Mode 0 - 10-2019	8,0	From other hub height	104,9	No h	
29	561378	6522492	82,6	Sweco SW180 7400 180,0 I-I hu...No	Sweco	SW180-7400	7400	180,0	200,0	USER	V150 Level 0 - - Mode 0 - 10-2019	8,0	From other hub height	104,9	No h	
30	562413	6522803	73,8	Sweco SW180 7400 180,0 I-I hu...No	Sweco	SW180-7400	7400	180,0	200,0	USER	V150 Level 0 - - Mode 0 - 10-2019	8,0	From other hub height	104,9	No h	

h) Generic octave distribution used

Calculation Results

Sound level

No.	Name	Easting	Northing	Z	Imission height [m]	Noise [dB(A)]	Sound level		Demands fulfilled ?
							From WTGs [dB(A)]	Distance to noise demand [m]	
A	Noise sensitive point: Swedish - Night; Dwellings (241)	568905	6522963	59,7	1,5	40,0	36,7	300	Yes
B	Noise sensitive point: Swedish - Night; Dwellings (242)	568240	6524512	45,6	1,5	40,0	38,4	102	Yes
C	Noise sensitive point: Swedish - Night; Dwellings (243)	569382	6523385	55,6	1,5	40,0	33,7	834	Yes
D	Noise sensitive point: Swedish - Night; Dwellings (244)	568610	6524402	48,2	1,5	40,0	37,3	184	Yes
E	Noise sensitive point: Swedish - Night; Dwellings (245)	556231	6510286	81,6	1,5	40,0	17,1	7594	Yes
F	Noise sensitive point: Swedish - Night; Dwellings (246)	562054	6518043	76,6	1,5	40,0	39,2	185	Yes
G	Noise sensitive point: Swedish - Night; Dwellings (247)	562914	6516555	82,0	1,5	40,0	37,5	411	Yes
H	Noise sensitive point: Swedish - Night; Dwellings (248)	563189	6511336	84,1	1,5	40,0	22,0	5151	Yes
I	Noise sensitive point: Swedish - Night; Dwellings (249)	566886	6519376	71,2	1,5	40,0	36,3	498	Yes
J	Noise sensitive point: Swedish - Night; Dwellings (250)	566901	6511511	74,1	1,5	40,0	20,8	6170	Yes
K	Noise sensitive point: Swedish - Night; Dwellings (251)	564075	6521983	72,8	1,5	40,0	39,9	25	Yes
L	Noise sensitive point: Swedish - Night; Dwellings (252)	558655	6514010	81,9	1,5	40,0	24,7	3180	Yes

To be continued on next page...

DECIBEL - Main Result

Calculation: 20200825 KLB

...continued from previous page

Noise sensitive area

No.	Name	Easting	Northing	Z	Emission height	Demands Noise	Sound level		Demands fulfilled ?
							From WTGs	Distance to noise demand	
					[m]	[dB(A)]	[dB(A)]	[m]	Noise
M	Noise sensitive point: Swedish - Night; Dwellings (253)	562978	6519647	74,7	1,5	40,0	39,1	139	Yes
N	Noise sensitive point: Swedish - Night; Dwellings (254)	563191	6519068	66,7	1,5	40,0	38,1	336	Yes
O	Noise sensitive point: Swedish - Night; Dwellings (255)	563374	6511507	94,0	1,5	40,0	22,3	5055	Yes
P	Noise sensitive point: Swedish - Night; Dwellings (256)	566539	6510040	64,5	1,5	40,0	19,0	7442	Yes
Q	Noise sensitive point: Swedish - Night; Dwellings (257)	566543	6515760	78,1	1,5	40,0	28,7	2372	Yes
R	Noise sensitive point: Swedish - Night; Dwellings (258)	566923	6510275	65,9	1,5	40,0	19,1	7336	Yes
S	Noise sensitive point: Swedish - Night; Dwellings (259)	567513	6511915	82,7	1,5	40,0	21,0	6064	Yes
T	Noise sensitive point: Swedish - Night; Dwellings (260)	567597	6514171	93,2	1,5	40,0	24,3	4252	Yes
U	Noise sensitive point: Swedish - Night; Dwellings (261)	567702	6519214	68,5	1,5	40,0	33,1	1293	Yes
V	Noise sensitive point: Swedish - Night; Dwellings (262)	563341	6523236	63,6	1,5	40,0	36,9	441	Yes
W	Noise sensitive point: Swedish - Night; Dwellings (263)	564139	6520030	82,7	1,5	40,0	39,5	91	Yes
X	Noise sensitive point: Swedish - Night; Dwellings (264)	565594	6523948	67,0	1,5	40,0	38,0	289	Yes
Y	Noise sensitive point: Swedish - Night; Dwellings (265)	556386	6510860	86,1	1,5	40,0	17,8	7048	Yes
Z	Noise sensitive point: Swedish - Night; Dwellings (266)	561021	6513316	96,3	1,5	40,0	25,8	2854	Yes
AA	Noise sensitive point: Swedish - Night; Dwellings (267)	561885	6516219	79,8	1,5	40,0	38,2	176	Yes
AB	Noise sensitive point: Swedish - Night; Dwellings (268)	562919	6514363	86,0	1,5	40,0	28,9	2280	Yes
AC	Noise sensitive point: Swedish - Night; Dwellings (269)	563002	6514124	86,5	1,5	40,0	28,1	2533	Yes
AD	Noise sensitive point: Swedish - Night; Dwellings (270)	564804	6515714	89,0	1,5	40,0	31,3	1513	Yes
AE	Noise sensitive point: Swedish - Night; Dwellings (271)	567140	6515889	66,8	1,5	40,0	28,0	2725	Yes
AF	Noise sensitive point: Swedish - Night; Dwellings (272)	568517	6519443	69,6	1,5	40,0	31,3	1723	Yes
AG	Noise sensitive point: Swedish - Night; Dwellings (273)	567854	6522500	84,4	1,5	40,0	39,3	99	Yes
AH	Noise sensitive point: Swedish - Night; Dwellings (274)	558594	6518646	86,9	1,5	40,0	29,7	1861	Yes
AI	Noise sensitive point: Swedish - Night; Dwellings (275)	560383	6510150	97,4	1,5	40,0	19,6	6071	Yes
AJ	Noise sensitive point: Swedish - Night; Dwellings (276)	560709	6511735	101,7	1,5	40,0	22,3	4458	Yes
AK	Noise sensitive point: Swedish - Night; Dwellings (277)	561012	6512771	104,1	1,5	40,0	24,5	3398	Yes
AL	Noise sensitive point: Swedish - Night; Dwellings (278)	564294	6510935	104,6	1,5	40,0	21,1	5960	Yes
AM	Noise sensitive point: Swedish - Night; Dwellings (279)	565977	6513705	84,0	1,5	40,0	25,1	3790	Yes
AN	Noise sensitive point: Swedish - Night; Dwellings (280)	566867	6519903	81,4	1,5	40,0	37,3	462	Yes
AO	Noise sensitive point: Swedish - Night; Dwellings (281)	563368	6520050	73,4	1,5	40,0	39,6	67	Yes
AP	Noise sensitive point: Swedish - Night; Dwellings (282)	565761	6524172	59,4	1,5	40,0	37,5	285	Yes
AQ	Noise sensitive point: Swedish - Night; Dwellings (283)	566150	6520310	72,0	1,5	40,0	39,8	74	Yes
AR	Noise sensitive point: Swedish - Night; Dwellings (284)	567176	6520340	78,1	1,5	40,0	38,4	159	Yes
AS	Noise sensitive point: Swedish - Night; Dwellings (285)	567205	6524109	66,9	1,5	40,0	39,0	111	Yes
AT	Noise sensitive point: Swedish - Night; Dwellings (286)	559637	6515665	83,4	1,5	40,0	30,7	1349	Yes
AU	Noise sensitive point: Swedish - Night; Dwellings (287)	561530	6518766	67,0	1,5	40,0	37,7	308	Yes
AV	Noise sensitive point: Swedish - Night; Dwellings (288)	562594	6515377	84,7	1,5	40,0	32,6	1215	Yes
AW	Noise sensitive point: Swedish - Night; Dwellings (289)	565506	6514084	87,6	1,5	40,0	26,3	3273	Yes
AX	Noise sensitive point: Swedish - Night; Dwellings (290)	567558	6512825	67,4	1,5	40,0	22,3	5302	Yes
AY	Noise sensitive point: Swedish - Night; Dwellings (291)	570352	6522640	74,6	1,5	40,0	30,1	1370	Yes
AZ	Noise sensitive point: Swedish - Night; Dwellings (292)	557352	6511848	83,5	1,5	40,0	19,9	5672	Yes
BA	Noise sensitive point: Swedish - Night; Dwellings (293)	557646	6513027	82,9	1,5	40,0	21,8	4588	Yes
BB	Noise sensitive point: Swedish - Night; Dwellings (294)	559680	6520810	73,2	1,5	40,0	32,9	1170	Yes
BC	Noise sensitive point: Swedish - Night; Dwellings (295)	560106	6519507	67,7	1,5	40,0	33,7	1113	Yes
BD	Noise sensitive point: Swedish - Night; Dwellings (296)	560205	6517741	92,0	1,5	40,0	38,3	150	Yes
BE	Noise sensitive point: Swedish - Night; Dwellings (297)	560638	6515605	95,6	1,5	40,0	33,6	712	Yes
BF	Noise sensitive point: Swedish - Night; Dwellings (298)	563093	6519342	66,3	1,5	40,0	38,2	458	Yes
BG	Noise sensitive point: Swedish - Night; Dwellings (299)	563483	6511743	96,1	1,5	40,0	22,7	4879	Yes
BH	Noise sensitive point: Swedish - Night; Dwellings (300)	564404	6519165	80,7	1,5	40,0	38,8	256	Yes
BI	Noise sensitive point: Swedish - Night; Dwellings (301)	566284	6517362	84,8	1,5	40,0	33,4	1050	Yes
BJ	Noise sensitive point: Swedish - Night; Dwellings (302)	566524	6519911	73,9	1,5	40,0	38,2	423	Yes
BK	Noise sensitive point: Swedish - Night; Dwellings (303)	567192	6514543	67,2	1,5	40,0	25,4	3704	Yes
BL	Noise sensitive point: Swedish - Night; Dwellings (304)	567363	6519187	73,5	1,5	40,0	34,1	954	Yes
BM	Noise sensitive point: Swedish - Night; Dwellings (305)	565558	6523584	71,5	1,5	40,0	39,8	36	Yes
BN	Noise sensitive point: Swedish - Night; Dwellings (306)	566797	6520194	76,8	1,5	40,0	38,6	163	Yes
BO	Noise sensitive point: Swedish - Night; Dwellings (307)	557223	6509515	71,6	1,5	40,0	17,0	7692	Yes
BP	Noise sensitive point: Swedish - Night; Dwellings (308)	562143	6509707	114,2	1,5	40,0	19,3	6508	Yes
BQ	Noise sensitive point: Swedish - Night; Dwellings (309)	561490	6519818	76,5	1,5	40,0	38,1	298	Yes
BR	Noise sensitive point: Swedish - Night; Dwellings (310)	564464	6516039	76,3	1,5	40,0	33,0	1141	Yes
BS	Noise sensitive point: Swedish - Night; Dwellings (311)	566446	6517894	66,5	1,5	40,0	34,6	779	Yes
BT	Noise sensitive point: Swedish - Night; Dwellings (312)	566883	6513229	71,0	1,5	40,0	23,5	4608	Yes
BU	Noise sensitive point: Swedish - Night; Dwellings (313)	568733	6520262	68,2	1,5	40,0	32,3	1434	Yes
BV	Noise sensitive point: Swedish - Night; Dwellings (314)	569202	6520674	75,4	1,5	40,0	32,0	1166	Yes
BW	Noise sensitive point: Swedish - Night; Dwellings (315)	559535	6508871	83,6	1,5	40,0	17,5	7477	Yes
BX	Noise sensitive point: Swedish - Night; Dwellings (316)	560354	6516885	93,9	1,5	40,0	38,2	160	Yes

To be continued on next page...

DECIBEL - Main Result

Calculation: 20200825 KLB

...continued from previous page

Noise sensitive area

No.	Name	Easting	Northing	Z	Emission height	Demands Noise	Sound level From WTGs	Distance to noise demand	Demands fulfilled ? Noise
					[m]	[dB(A)]	[dB(A)]	[m]	
BY	Noise sensitive point: Swedish - Night; Dwellings (317)	561487	6512897	103,6	1,5	40,0	25,0	3270	Yes
BZ	Noise sensitive point: Swedish - Night; Dwellings (318)	562625	6515166	82,7	1,5	40,0	31,7	1427	Yes
CA	Noise sensitive point: Swedish - Night; Dwellings (319)	562722	6513142	90,9	1,5	40,0	25,7	3295	Yes
CB	Noise sensitive point: Swedish - Night; Dwellings (320)	564169	6512825	96,0	1,5	40,0	24,6	4103	Yes
CC	Noise sensitive point: Swedish - Night; Dwellings (321)	564385	6510215	114,3	1,5	40,0	20,0	6644	Yes
CD	Noise sensitive point: Swedish - Night; Dwellings (322)	564446	6516727	73,2	1,5	40,0	36,3	456	Yes
CE	Noise sensitive point: Swedish - Night; Dwellings (323)	564768	6512824	88,6	1,5	40,0	24,3	4232	Yes
CF	Noise sensitive point: Swedish - Night; Dwellings (324)	567738	6515353	71,3	1,5	40,0	26,1	3518	Yes
CG	Noise sensitive point: Swedish - Night; Dwellings (325)	560434	6522183	59,8	1,5	40,0	37,2	265	Yes
CH	Noise sensitive point: Swedish - Night; Dwellings (326)	563243	6522446	65,5	1,5	40,0	39,0	212	Yes
CI	Noise sensitive point: Swedish - Night; Dwellings (327)	570364	6521923	71,0	1,5	40,0	30,0	1361	Yes
CJ	Noise sensitive point: Swedish - Night; Dwellings (328)	563213	6522968	64,1	1,5	40,0	38,1	218	Yes
CK	Noise sensitive point: Swedish - Night; Dwellings (329)	566942	6525153	56,2	1,5	40,0	33,6	860	Yes
CL	Noise sensitive point: Swedish - Night; Dwellings (330)	560104	6519432	64,5	1,5	40,0	33,8	1050	Yes
CM	Noise sensitive point: Swedish - Night; Dwellings (331)	570046	6520527	67,8	1,5	40,0	29,3	1768	Yes
CN	Noise sensitive point: Swedish - Night; Dwellings (332)	566943	6520322	84,4	1,5	40,0	39,3	70	Yes
CO	Noise sensitive point: Swedish - Night; Dwellings (333)	566993	6520339	81,7	1,5	40,0	39,2	72	Yes
CP	Noise sensitive point: Swedish - Night; Dwellings (334)	566842	6520258	85,8	1,5	40,0	39,0	107	Yes
CQ	Noise sensitive point: Swedish - Night; Dwellings (335)	566938	6520255	83,5	1,5	40,0	38,7	132	Yes
CR	Noise sensitive point: Swedish - Night; Dwellings (336)	563377	6520030	74,4	1,5	40,0	39,5	89	Yes
CS	Noise sensitive point: Swedish - Night; Dwellings (337)	562988	6519456	68,9	1,5	40,0	38,3	307	Yes
CT	Noise sensitive point: Swedish - Night; Dwellings (338)	563050	6519498	75,5	1,5	40,0	38,4	303	Yes
CU	Noise sensitive point: Swedish - Night; Dwellings (339)	563109	6519224	65,2	1,5	40,0	38,1	490	Yes
CV	Noise sensitive point: Swedish - Night; Dwellings (340)	563226	6519170	71,6	1,5	40,0	38,2	440	Yes
CW	Noise sensitive point: Swedish - Night; Dwellings (341)	561554	6519783	74,2	1,5	40,0	38,2	292	Yes
CX	Noise sensitive point: Swedish - Night; Dwellings (342)	561517	6519618	65,8	1,5	40,0	37,5	431	Yes
CY	Noise sensitive point: Swedish - Night; Dwellings (343)	562051	6518064	76,0	1,5	40,0	39,1	206	Yes
CZ	Noise sensitive point: Swedish - Night; Dwellings (344)	562134	6518048	82,6	1,5	40,0	39,0	201	Yes
DA	Noise sensitive point: Swedish - Night; Dwellings (345)	566367	6517261	79,2	1,5	40,0	32,9	1181	Yes
DB	Noise sensitive point: Swedish - Night; Dwellings (346)	566369	6517302	82,3	1,5	40,0	33,0	1154	Yes
DC	Noise sensitive point: Swedish - Night; Dwellings (347)	566555	6516740	88,1	1,5	40,0	31,0	1694	Yes
DD	Noise sensitive point: Swedish - Night; Dwellings (348)	567495	6519229	72,2	1,5	40,0	33,8	1086	Yes
DE	Noise sensitive point: Swedish - Night; Dwellings (349)	568571	6524497	45,7	1,5	40,0	36,7	231	Yes
DF	Noise sensitive point: Swedish - Night; Dwellings (350)	566135	6516212	69,0	1,5	40,0	30,5	1765	Yes
DG	Noise sensitive point: Swedish - Night; Dwellings (351)	566435	6509814	82,5	1,5	40,0	18,7	7620	Yes
DH	Noise sensitive point: Swedish - Night; Dwellings (352)	564687	6509628	114,0	1,5	40,0	19,0	7305	Yes
DI	Noise sensitive point: Swedish - Night; Dwellings (353)	564188	6510447	115,2	1,5	40,0	20,4	6350	Yes
DJ	Noise sensitive point: Swedish - Night; Dwellings (354)	563319	6511472	90,4	1,5	40,0	22,2	5068	Yes
DK	Noise sensitive point: Swedish - Night; Dwellings (355)	563169	6511317	84,2	1,5	40,0	21,9	5163	Yes
DL	Noise sensitive point: Swedish - Night; Dwellings (356)	563069	6511164	84,6	1,5	40,0	21,7	5278	Yes
DM	Noise sensitive point: Swedish - Night; Dwellings (357)	563402	6511671	95,9	1,5	40,0	22,5	4914	Yes
DN	Noise sensitive point: Swedish - Night; Dwellings (358)	559629	6508225	84,6	1,5	40,0	16,7	8091	Yes
DO	Noise sensitive point: Swedish - Night; Dwellings (359)	558014	6508424	72,5	1,5	40,0	16,2	8346	Yes
DP	Noise sensitive point: Swedish - Night; Dwellings (360)	557083	6509580	76,4	1,5	40,0	17,0	7705	Yes
DQ	Noise sensitive point: Swedish - Night; Dwellings (361)	557746	6508562	77,4	1,5	40,0	16,2	8321	Yes
DR	Noise sensitive point: Swedish - Night; Dwellings (362)	556170	6510367	83,0	1,5	40,0	17,2	7567	Yes
DS	Noise sensitive point: Swedish - Night; Dwellings (363)	556158	6512227	87,9	1,5	40,0	19,1	6217	Yes
DT	Noise sensitive point: Swedish - Night; Dwellings (364)	556950	6512991	82,2	1,5	40,0	20,9	5117	Yes
DU	Noise sensitive point: Swedish - Night; Dwellings (365)	561182	6512832	100,9	1,5	40,0	24,7	3330	Yes
DV	Noise sensitive point: Swedish - Night; Dwellings (366)	564855	6515798	88,4	1,5	40,0	31,5	1444	Yes
DW	Noise sensitive point: Swedish - Night; Dwellings (367)	564840	6515591	87,4	1,5	40,0	30,9	1641	Yes
DX	Noise sensitive point: Swedish - Night; Dwellings (368)	563052	6514168	91,9	1,5	40,0	28,2	2505	Yes
DY	Noise sensitive point: Swedish - Night; Dwellings (369)	563022	6514192	95,2	1,5	40,0	28,3	2473	Yes
DZ	Noise sensitive point: Swedish - Night; Dwellings (370)	562947	6516499	85,7	1,5	40,0	37,2	468	Yes
EA	Noise sensitive point: Swedish - Night; Dwellings (377)	564363	6513320	91,4	1,5	40,0	25,5	3653	Yes

Distances (m)

NSA	WTG																					
	1	2	3	4	5	6	7	8	9	10	11	12	13	14	15	16	17	18	19	20	21	22
A	1227	9885	7096	4914	7749	2553	2447	7001	2476	3796	842	9337	3482	7364	9015	5954	9674	4692	2894	3248	5824	7551
B	615	10475	6980	5900	8524	3132	2660	7185	1820	3619	2308	9728	4008	7384	9649	6101	10156	5298	3809	3494	6739	8200
C	1364	10521	7659	5542	8384	3171	3013	7606	2841	4321	1455	9965	4105	7949	9651	6551	10307	5325	3530	3837	6455	8188
D	694	10646	7269	5962	8649	3252	2840	7425	2130	3893	2185	9938	4156	7653	9809	6342	10349	5445	3867	3690	6824	8353
E	18083	8153	12539	13054	10177	15530	15957	11755	17006	15251	17123	9100	14619	11904	8968	12770	8559	13331	15035	15134	12128	10423

To be continued on next page...

DECIBEL - Main Result

Calculation: 20200825 KLB

...continued from previous page

Table with columns labeled NSA and WTG, and rows numbered 1 through 22. Each row contains 22 numerical values representing decibel levels for different wind turbine types.

To be continued on next page...

DECIBEL - Main Result

Calculation: 20200825 KLB

...continued from previous page

	WTG							
NSA	23	24	25	26	27	28	29	30
V	1858	1967	2720	2771	5556	2619	2099	1024
W	1883	2187	938	3564	2265	3373	3699	3266
X	3696	1993	3262	1072	6289	4921	4461	3381
Y	12413	14094	12935	15554	10572	11874	12658	13378
Z	8330	9586	8336	10941	5585	8394	9183	9588
AA	5311	6595	5366	7990	2942	5530	6293	6605
AB	7071	7965	6692	9210	3714	7541	8273	8455
AC	7311	8176	6904	9407	3905	7792	8524	8699
AD	6033	6358	5124	7405	2107	6987	7594	7481
AE	6989	6566	5551	7191	3344	8306	8763	8375
AF	5974	4450	4138	4303	4460	7647	7763	6968
AG	5082	2960	3637	1823	5863	6689	6477	5450
AH	5118	7199	6412	8683	5851	4030	4748	5645
AI	11558	12757	11495	14070	8612	11588	12382	12814
AJ	9941	11163	9906	12495	7071	9986	10778	11199
AK	8864	10090	8835	11431	6035	8939	9728	10129
AL	10593	11153	9905	12204	6843	11205	11919	12016
AM	8325	8432	7259	9301	4375	9314	9918	9771
AN	4267	2910	2433	3195	3271	5936	6069	5315
AO	1467	2552	1478	4026	2487	2719	3150	2914
AP	3971	2261	3526	1216	6541	5173	4694	3617
AQ	3453	2144	1618	2695	3090	5131	5247	4492
AR	4428	2838	2603	2873	3792	6117	6184	5361
AS	5080	3057	4171	1560	6933	6455	6047	4966
AT	6621	8307	7181	9782	5192	6245	7045	7659
AU	2993	4739	3719	6236	3017	2959	3729	4132
AV	6064	7088	5822	8396	2992	6480	7218	7428
AW	7803	8007	6809	8941	3861	8749	9366	9251
AX	9796	9613	8532	10283	5885	10916	11473	11226
AY	7564	5456	6010	4265	7701	9187	8976	7941
AZ	11069	12723	11559	14180	9196	10589	11380	12068
BA	9907	11610	10470	13080	8242	9386	10174	10877
BB	3266	5396	4940	6788	5593	1777	2390	3383
BC	3382	5460	4706	6942	4611	2464	3244	4023
BD	4564	6406	5392	7906	4175	4094	4894	5523
BE	6248	7759	6574	9199	4327	6130	6927	7414
BF	2103	3288	2137	4741	2025	3022	3587	3527
BG	9710	10428	9163	11563	6101	10220	10953	11111
BH	2730	2952	1684	4199	1388	4080	4497	4147
BI	5304	4901	3851	5646	1949	6678	7098	6677
BJ	3945	2687	2117	3123	3024	5607	5757	5026
BK	8126	7861	6798	8532	4286	9332	9848	9542
BL	5010	3775	3200	4020	3299	6647	6837	6130
BM	3430	1639	2904	795	5924	4732	4320	3240
BN	4104	2650	2270	2896	3418	5786	5887	5102
BO	13196	14730	13523	16150	10932	12829	13626	14265
BP	11751	12674	11401	13876	8376	12037	12808	13099
BQ	2136	4109	3292	5607	3538	1911	2676	3125
BR	5622	6050	4799	7156	1741	6535	7153	7068
BS	5021	4444	3462	5122	2069	6475	6842	6352
BT	9127	9055	7936	9807	5192	10200	10775	10565
BU	5965	4215	4153	3801	5012	7658	7686	6812
BV	6362	4498	4585	3878	5625	8056	8032	7115
BW	13003	14259	13001	15586	10140	12946	13745	14226
BX	5206	6913	5814	8396	4123	4899	5699	6266
BY	8651	9797	8534	11112	5674	8815	9595	9949
BZ	6274	7279	6011	8576	3147	6693	7431	7640
CA	8294	9197	7924	10427	4924	8698	9446	9666
CB	8705	9277	8023	10362	4957	9362	10061	10131
CC	11319	11868	10623	12905	7563	11923	12640	12741
CD	4959	5365	4112	6493	1053	5938	6530	6406
CE	8814	9248	8013	10268	4969	9569	10245	10253
CF	7780	7282	6307	7825	4142	9108	9561	9157
CG	2563	4494	4398	5728	5914	912	993	2074
CH	1073	1725	2119	2914	4805	2160	1866	903

To be continued on next page...

DECIBEL - Main Result

Calculation: 20200825 KLB

...continued from previous page

	WTG							
NSA	23	24	25	26	27	28	29	30
CI	7495	5440	5846	4397	7279	9154	9004	8000
CJ	1568	1933	2554	2890	5319	2364	1896	817
CK	5503	3683	4902	2306	7808	6685	6168	5102
CL	3427	5497	4729	6983	4585	2532	3315	4086
CM	7218	5348	5435	4657	6298	8912	8888	7965
CN	4208	2670	2379	2812	3611	5895	5973	5165
CO	4252	2697	2424	2811	3659	5940	6014	5201
CP	4128	2638	2296	2845	3495	5813	5903	5108
CQ	4221	2710	2389	2874	3561	5906	5993	5192
CR	1488	2562	1481	4035	2465	2739	3172	2936
CS	1981	3255	2137	4722	2180	2867	3436	3396
CT	1944	3185	2063	4650	2174	2874	3429	3366
CU	2222	3377	2209	4823	1925	3125	3698	3646
CV	2290	3362	2172	4794	1808	3240	3801	3723
CW	2122	4075	3242	5575	3465	1956	2715	3140
CX	2274	4199	3333	5701	3403	2112	2877	3308
CY	3472	4932	3779	6390	2346	3739	4479	4753
CZ	3468	4896	3735	6350	2262	3774	4507	4763
DA	5436	5021	3979	5750	2054	6808	7229	6808
DB	5405	4982	3943	5709	2045	6782	7200	6775
DC	5958	5574	4529	6281	2410	7295	7738	7342
DD	5110	3831	3293	4025	3436	6753	6933	6212
DE	6458	4378	5386	2884	7919	7869	7467	6387
DF	6151	5982	4865	6793	2352	7378	7878	7569
DG	12151	12349	11170	13195	8225	12990	13649	13597
DH	11944	12446	11208	13452	8156	12570	13283	13370
DI	11065	11647	10398	12704	7334	11648	12368	12483
DJ	9972	10720	9453	11864	6394	10450	11189	11367
DK	10121	10896	9628	12050	6573	10573	11317	11510
DL	10272	11064	9795	12223	6742	10706	11453	11657
DM	9777	10511	9245	11651	6185	10273	11008	11176
DN	13605	14825	13563	16136	10670	13576	14374	14842
DO	13892	15297	14060	16674	11314	13663	14464	15036
DP	13198	14749	13546	16174	10975	12812	13607	14257
DQ	13861	15299	14068	16687	11356	13596	14396	14987
DR	12945	14617	13453	16074	11060	12411	13196	13915
DS	11404	13183	12071	14665	9921	10745	11516	12287
DT	10320	12085	10971	13566	8838	9703	10482	11230
DU	8769	9968	8711	11301	5890	8876	9661	10046
DV	5971	6273	5043	7314	2036	6942	7543	7418
DW	6161	6480	5249	7521	2234	7111	7720	7609
DX	7268	8122	6849	9349	3846	7761	8490	8658
DY	7243	8105	6833	9336	3834	7730	8461	8632
DZ	4936	5913	4648	7231	1921	5490	6195	6326
EA	8248	8769	7520	9840	4458	8960	9645	9681