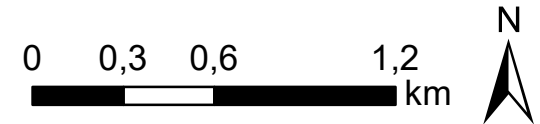
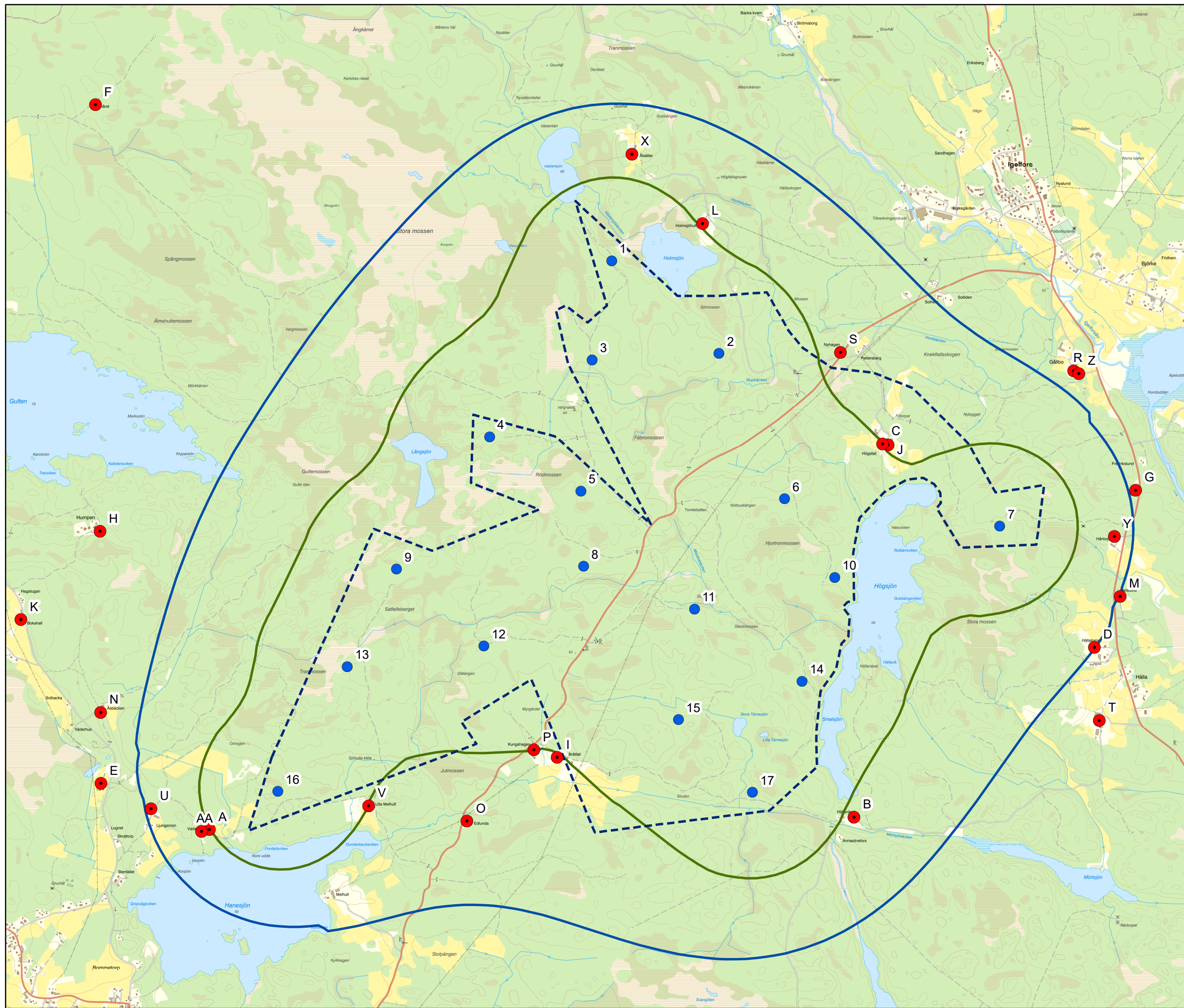


- Ljudkänsliga objekt
- ▭ Utredningsområde
- Exempel på verksplacering

Ljudnivå

- 35 dB(A)
- 40 dB(A)



Sweco Energy AB/seaubo
Datum: 2020-09-21
© Lantmäteriet



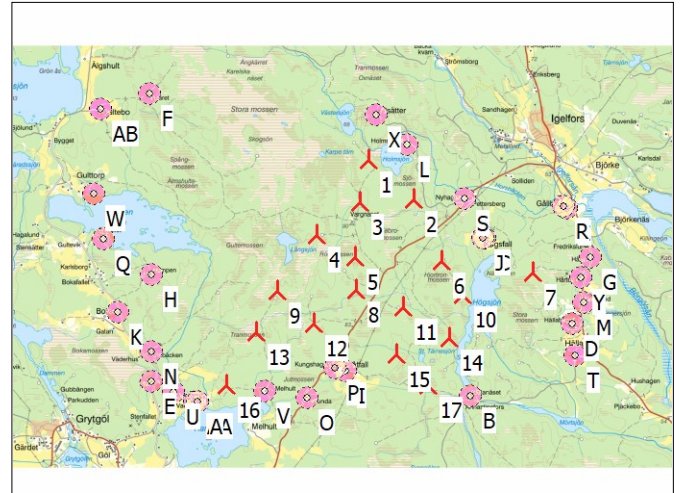
DECIBEL - Main Result

Calculation: 20200824

SVENSKA BESTÄMMELSER FÖR EXTERNT BULLER FRÅN
LANDBASERADE VINDKRAFTVERK

Beräkningen är baserad på den av Statens Naturvårdsverk
rekommenderad metod "Ljud från vindkraftverk", 2010 (NV dnr
382-6897-07 Rv)

All coordinates are in
Swedish UTM 33-SWREF99 (SE)



Scale 1:125 000

🚧 New WTG

🏠 Noise sensitive area

WTGs

	Easting	Northing	Z	Row data/Description	WTG type			Power, rated [kW]	Rotor diameter [m]	Hub height [m]	Noise data		Wind speed [m/s]	Status	LwA,ref [dB(A)]	Pure tones
					Valid	Manufact.	Type-generator				Creator	Name				
1	537171	6522022	77,0	Sweco SW180 7400 180.0 I-I hu...No	Sweco	SW180-7400	7400	180,0	200,0	USER	V150 Level 0 - - Mode 0 - 10-2019	8,0	From other hub height	104,9	No h	
2	537112	6520575	75,3	Sweco SW180 7400 180.0 I-I hu...No	Sweco	SW180-7400	7400	180,0	200,0	USER	V150 Level 0 - - Mode 0 - 10-2019	8,0	From other hub height	104,9	No h	
3	534969	6518998	70,8	Sweco SW180 7400 180.0 I-I hu...No	Sweco	SW180-7400	7400	180,0	200,0	USER	V150 Level 0 - - Mode 0 - 10-2019	8,0	From other hub height	104,9	No h	
4	538296	6518992	70,7	Sweco SW180 7400 180.0 I-I hu...No	Sweco	SW180-7400	7400	180,0	200,0	USER	V150 Level 0 - - Mode 0 - 10-2019	8,0	From other hub height	104,9	No h	
5	535802	6520556	79,2	Sweco SW180 7400 180.0 I-I hu...No	Sweco	SW180-7400	7400	180,0	200,0	USER	V150 Level 0 - - Mode 0 - 10-2019	8,0	From other hub height	104,9	No h	
6	538520	6521048	70,8	Sweco SW180 7400 180.0 I-I hu...No	Sweco	SW180-7400	7400	180,0	200,0	USER	V150 Level 0 - - Mode 0 - 10-2019	8,0	From other hub height	104,9	No h	
7	536453	6521483	80,7	Sweco SW180 7400 180.0 I-I hu...No	Sweco	SW180-7400	7400	180,0	200,0	USER	V150 Level 0 - - Mode 0 - 10-2019	8,0	From other hub height	104,9	No h	
8	537776	6519500	70,5	Sweco SW180 7400 180.0 I-I hu...No	Sweco	SW180-7400	7400	180,0	200,0	USER	V150 Level 0 - - Mode 0 - 10-2019	8,0	From other hub height	104,9	No h	
9	537092	6521102	79,6	Sweco SW180 7400 180.0 I-I hu...No	Sweco	SW180-7400	7400	180,0	200,0	USER	V150 Level 0 - - Mode 0 - 10-2019	8,0	From other hub height	104,9	No h	
10	538872	6520497	62,7	Sweco SW180 7400 180.0 I-I hu...No	Sweco	SW180-7400	7400	180,0	200,0	USER	V150 Level 0 - - Mode 0 - 10-2019	8,0	From other hub height	104,9	No h	
11	536414	6520017	79,2	Sweco SW180 7400 180.0 I-I hu...No	Sweco	SW180-7400	7400	180,0	200,0	USER	V150 Level 0 - - Mode 0 - 10-2019	8,0	From other hub height	104,9	No h	
12	537889	6520276	72,7	Sweco SW180 7400 180.0 I-I hu...No	Sweco	SW180-7400	7400	180,0	200,0	USER	V150 Level 0 - - Mode 0 - 10-2019	8,0	From other hub height	104,9	No h	
13	535456	6519872	77,2	Sweco SW180 7400 180.0 I-I hu...No	Sweco	SW180-7400	7400	180,0	200,0	USER	V150 Level 0 - - Mode 0 - 10-2019	8,0	From other hub height	104,9	No h	
14	538061	6522066	75,1	Sweco SW180 7400 180.0 I-I hu...No	Sweco	SW180-7400	7400	180,0	200,0	USER	V150 Level 0 - - Mode 0 - 10-2019	8,0	From other hub height	104,9	No h	
15	538644	6519769	62,3	Sweco SW180 7400 180.0 I-I hu...No	Sweco	SW180-7400	7400	180,0	200,0	USER	V150 Level 0 - - Mode 0 - 10-2019	8,0	From other hub height	104,9	No h	
16	540028	6520857	63,2	Sweco SW180 7400 180.0 I-I hu...No	Sweco	SW180-7400	7400	180,0	200,0	USER	V150 Level 0 - - Mode 0 - 10-2019	8,0	From other hub height	104,9	No h	
17	537309	6522715	73,4	Sweco SW180 7400 180.0 I-I hu...No	Sweco	SW180-7400	7400	180,0	200,0	USER	V150 Level 0 - - Mode 0 - 10-2019	8,0	From other hub height	104,9	No h	

Calculation Results

Sound level

Noise sensitive area
No. Name

No.	Name	Easting	Northing	Z	Imission height [m]	Demands		Demands fulfilled ?
						Noise [dB(A)]	Sound level From WTGs [dB(A)]	
A	Noise sensitive point: Swedish - Day; Light industrial locations (797)	534491	6518731	71,6	1,5	60	40	Yes
B	Noise sensitive point: Swedish - Day; Light industrial locations (798)	539006	6518817	58,4	1,5	60	39	Yes
C	Noise sensitive point: Swedish - Day; Light industrial locations (799)	539245	6521425	69,1	1,5	60	40	Yes
D	Noise sensitive point: Swedish - Day; Light industrial locations (800)	540692	6520008	68,3	1,5	60	35	Yes
E	Noise sensitive point: Swedish - Day; Light industrial locations (801)	533730	6519056	79,4	1,5	60	33	Yes
F	Noise sensitive point: Swedish - Day; Light industrial locations (802)	533692	6523808	90,6	1,5	60	27	Yes
G	Noise sensitive point: Swedish - Day; Light industrial locations (803)	540979	6521108	64,5	1,5	60	34	Yes
H	Noise sensitive point: Swedish - Day; Light industrial locations (804)	533725	6520820	82,1	1,5	60	32	Yes
I	Noise sensitive point: Swedish - Day; Light industrial locations (805)	536928	6519237	78,3	1,5	60	40	Yes
J	Noise sensitive point: Swedish - Day; Light industrial locations (806)	539209	6521434	69,3	1,5	60	40	Yes
K	Noise sensitive point: Swedish - Day; Light industrial locations (807)	533170	6520201	86,7	1,5	60	31	Yes
L	Noise sensitive point: Swedish - Day; Light industrial locations (808)	537947	6522978	77,3	1,5	60	40	Yes
M	Noise sensitive point: Swedish - Day; Light industrial locations (809)	540871	6520365	64,4	1,5	60	35	Yes
N	Noise sensitive point: Swedish - Day; Light industrial locations (810)	533729	6519551	82,9	1,5	60	33	Yes
O	Noise sensitive point: Swedish - Day; Light industrial locations (811)	536296	6518790	77,6	1,5	60	37	Yes
P	Noise sensitive point: Swedish - Day; Light industrial locations (812)	536765	6519288	75,9	1,5	60	40	Yes
Q	Noise sensitive point: Swedish - Day; Light industrial locations (813)	532937	6521420	85,3	1,5	60	29	Yes
R	Noise sensitive point: Swedish - Day; Light industrial locations (814)	540546	6521946	61,0	1,5	60	34	Yes
S	Noise sensitive point: Swedish - Day; Light industrial locations (815)	538911	6522074	71,2	1,5	60	39	Yes
T	Noise sensitive point: Swedish - Day; Light industrial locations (816)	540726	6519495	71,2	1,5	60	33	Yes
U	Noise sensitive point: Swedish - Day; Light industrial locations (817)	534082	6518878	77,8	1,5	60	35	Yes
V	Noise sensitive point: Swedish - Day; Light industrial locations (818)	535607	6518897	77,1	1,5	60	40	Yes
W	Noise sensitive point: Swedish - Day; Light industrial locations (819)	532778	6522156	79,2	1,5	60	28	Yes

To be continued on next page...

DECIBEL - Main Result

Calculation: 20200824

...continued from previous page

No.	Name	Easting	Northing	Z	Imission height	Demands Noise	Sound level From WTGs	Demands fulfilled ? Noise
					[m]	[dB(A)]	[dB(A)]	
X	Noise sensitive point: Swedish - Day; Light industrial locations (820)	537450	6523463	78,9	1,5	60	38	Yes
Y	Noise sensitive point: Swedish - Day; Light industrial locations (821)	540831	6520783	68,2	1,5	60	36	Yes
Z	Noise sensitive point: Swedish - Day; Light industrial locations (822)	540582	6521926	59,4	1,5	60	34	Yes
AA	Noise sensitive point: Swedish - Day; Light industrial locations (823)	534435	6518719	74,1	1,5	60	39	Yes
AB	Noise sensitive point: Swedish - Day; Light industrial locations (824)	532876	6523553	90,7	1,5	60	26	Yes

Distances (m)

NSA	WTG																
	1	2	3	4	5	6	7	8	9	10	11	12	13	14	15	16	17
A	4245	3205	548	3814	2247	4648	3380	3374	3520	4724	2313	3732	1495	4886	4281	5932	4881
B	3693	2585	4041	732	3645	2283	3691	1407	2980	1685	2857	1838	3704	3383	1019	2281	4252
C	2158	2297	4917	2612	3551	818	2793	2422	2177	1001	3163	1778	4095	1346	1762	967	2327
D	4056	3625	5811	2603	4920	2408	4488	2960	3762	1885	4278	2816	5238	3340	2062	1078	4333
E	4543	3707	1241	4566	2558	5188	3648	4071	3936	5340	2851	4334	1909	5275	4965	6551	5119
F	3911	4706	4977	6662	3877	5561	3610	5937	4346	6148	4667	5485	4313	4704	6390	6990	3778
G	3916	3904	6370	3417	5206	2460	4542	3584	3887	2194	4694	3201	5660	3071	2692	984	4007
H	3650	3396	2207	4923	2094	4801	2807	4261	3379	5157	2806	4199	1974	4512	5030	6303	4054
I	2796	1351	1973	1390	1734	2412	2295	889	1872	2317	934	1415	1603	3048	1797	3498	3499
J	2120	2266	4889	2607	3518	789	2756	2407	2142	995	3134	1756	4065	1310	1758	1002	2292
K	4397	3960	2164	5267	2656	5417	3525	4660	4025	5710	3249	4720	2310	5235	5491	6890	4843
L	1231	2544	4970	4001	3235	2013	2113	3482	2061	2647	3334	2703	3981	919	3283	2971	690
M	4054	3765	6058	2918	5072	2448	4557	3213	3850	2004	4471	2984	5438	3284	2306	976	4268
N	4237	3534	1358	4601	2303	5019	3339	4047	3703	5229	2724	4222	1756	5009	4919	6433	4778
O	3349	1963	1343	2010	1834	3170	2697	1642	2445	3091	1233	2178	1370	3722	2544	4267	4054
P	2764	1333	1819	1559	1592	2486	2217	1034	1843	2429	809	1496	1433	3066	1940	3621	3470
Q	4277	4260	3162	5883	2993	5596	3517	5207	4168	6006	3749	5082	2957	5165	5941	7114	4560
R	3375	3698	6308	3713	4943	2216	4119	3695	3555	2214	4560	3139	5496	2487	2891	1206	3327
S	1740	2342	5000	3143	3459	1098	2528	2813	2062	1577	3235	2069	4097	849	2320	1652	1726
T	4362	3773	5778	2482	5037	2698	4713	2950	3973	2108	4344	2943	5284	3703	2101	1531	4696
U	4408	3472	895	4215	2403	4940	3522	3746	3743	5056	2595	4055	1696	5099	4648	6267	5014
V	3495	2254	646	2690	1670	3621	2720	2251	2658	3636	1380	2666	987	4008	3159	4836	4180
W	4395	4613	3844	6360	3421	5848	3736	5660	4441	6315	4218	5445	3519	5284	6332	7365	4565
X	1467	2907	5108	4550	3342	2641	2217	3976	2388	3288	3598	3217	4107	1524	3881	3665	760
Y	3864	3725	6127	3104	5034	2326	4434	3313	3752	1980	4483	2986	5452	3053	2411	806	4018
Z	3412	3724	6330	3719	4972	2241	4153	3709	3585	2228	4585	3159	5522	2525	2899	1203	3367
AA	4290	3258	603	3871	2290	4703	3422	3432	3570	4780	2367	3789	1541	4935	4338	5988	4923
AB	4560	5178	5013	7083	4189	6175	4133	6359	4877	6730	5002	5989	4495	5394	6898	7643	4511